

**INTEGRATED  
SOCIAL SERVICES  
IN NIPISSING**

**INTÉGRATION  
DES SERVICES SOCIAUX  
DU NIPISSING**



## BEST Start Network

*Child Care Presentation  
September 28, 2005*

Presented by: Dave Plumstead

District of Nipissing  
Social Services  
Administration Board



Conseil d'administration  
des services sociaux  
du district de Nipissing



- Child Care Legislative Environment
- Key Events
- Key Reports & Studies
- Trends
- Population, Child Care Capacity
- Child Care Funding
- Supply & Demand



- 1987: *New Directions for Day Care*: Government policy changed to recognize day care as a *public* service – not a *welfare* service. Funds to expand non-profit child care would become available through a 3-yr. plan
- 1992: *Child Care Reform in Ontario, Setting the stage*
  - 4 basic principles formed the basis for childcare reform:  
*Quality, Affordability, Accessibility and Sound Management*
  - High quality child care would be accessible to every family in Ontario

*Ontario Child Care Management Framework*

  - Facilitated the development of new programs, and changes to existing programs



- 1987: *New Directions for Day Care*: Government policy changed to recognize day care as a *public* service – not a *welfare* service. Funds to expand non-profit child care would become available through a 3-yr. plan
- 1992: *Child Care Reform in Ontario, Setting the stage*
  - 4 basic principles formed the basis for childcare reform:  
*Quality, Affordability, Accessibility and Sound Management*
  - High quality child care would be accessible to every family in Ontario
  - Ontario Child Care Management Framework*
  - Facilitated the development of new programs, and changes to existing programs
- 1994: Royal Commission on Learning report: *For the Love of Learning*
  - 167 recommendations for sweeping change to Ontario's education system
  - The province should offer "school-readiness programs" for all 3-yr. olds.
- 1995: *The Early Years Program*: "A seamless day for ages 4 & 5"



- 1996: the Ministry of Community, Family and Children's Services released *Improving Child Care in Ontario* (Sept. 96)
- 1997: Child care licensing devolved to the Municipal Governments
- 2000: the Ministerial Council on Social Policy and Renewal launched a shared vision for children in the National Children's Agenda.



- 1996: the Ministry of Community, Family and Children's Services released *Improving Child Care in Ontario* (Sept. 96)
- 1997: Child care licensing devolved to the Municipal Governments
- 2000: the Ministerial Council on Social Policy and Renewal launched a shared vision for children in the National Children's Agenda.
- 2005: First Ministers of Social Services recognized the need to create the development of *quality early learning and childcare*, across the country. To meet this need, the *Quad* principles were developed: *Quality, Universally Inclusive, Accessible and Developmental*.

*Moving Forward on Early Learning and Child Care: Agreement-In-Principle* between the Government of Canada and the Government of Ontario.



- 1991: The Provincial Government introduced the *Wage Enhancement Grant*
- 1992: School Boards became eligible for licensing for operating child care centres. Approximately 8,200 fully-funded child care subsidies, were targeted to assist unemployed parents looking for work or participating in job training programs
- 1994: *Pay Equity* for childcare staff was introduced (proxy method)



- 1991: The Provincial Government introduced the *Wage Enhancement Grant*
  - 1992: School Boards became eligible for licensing for operating child care centres. Approximately 8,200 fully-funded child care subsidies, were targeted to assist unemployed parents looking for work or participating in job training programs
  - 1994: *Pay Equity* for childcare staff was introduced (proxy method)
  - 1995: Early Years Pilot Program - School Boards were asked to submit proposals for pilot status
- Change in Government: the Progressive Conservatives were elected on a platform that included “a change in direction for child care.....”
- 1996: The mechanism that allowed child care staff to benefit from the *Pay Equity Act* was eliminated



- 1998: Changes were made to the *Day Nurseries Act* (through the *Services Improvement Act*) that would facilitate the transferring of childcare management, from the Province, to the Municipalities.

*Ontario education funding formula was changed*

*Child Care Supplement for working families established*

- 2001: Early Years Plan implemented for children 0-6 yrs, \$30 million earmarked to establish centres across Ontario.



- 1998: Changes were made to the *Day Nurseries Act* (through the *Services Improvement Act*) that would facilitate the transferring of childcare management, from the Province, to the Municipalities.  
*Ontario education funding formula was changed*  
*Child Care Supplement for working families established*
- 2001: Early Years Plan implemented for children 0-6 yrs, \$30 million earmarked to establish centres across Ontario.
- 2003: Multilateral framework on *Early Learning and Child Care* was established between the Federal and Provincial Governments and the Territories. Ontario would receive approximately \$9.5 million in 03/04, and \$58 million in 04/05, for regulated childcare programs (children under 6 yrs).

The new incoming Liberal Government (Fall 03) released its child care platform *Best Start*, committing \$300 million

The *Ministry of Children's Services* was established (now called the *Ministry of Children and Youth Services*).



- 1998: Changes were made to the *Day Nurseries Act* (through the *Services Improvement Act*) that would facilitate the transferring of childcare management, from the Province, to the Municipalities.  
*Ontario education funding formula was changed*  
*Child Care Supplement for working families established*
- 2001: Early Years Plan implemented for children 0-6 yrs, \$30 million earmarked to establish centres across Ontario.
- 2003: Multilateral framework on *Early Learning and Child Care* was established between the Federal and Provincial Governments and the Territories. Ontario would receive approximately \$9.5 million in 03/04, and \$58 million in 04/05, for regulated childcare programs (children under 6 yrs).  
The new incoming Liberal Government (Fall 03) released its child care platform *Best Start*, committing \$300 million  
The *Ministry of Children's Services* was established (now called the *Ministry of Children and Youth Services*).
- 2004: *Best Start* strategy announced with a vision that *children in Ontario will be ready and eager to achieve success in school by the time they start Grade 1.*



- *Study of Early Child Care & Youth Development* (National Institute of Child Health & Development, 1989)
- *For the Love of Learning* (1994)
- *The Early Years Study* (Mustard, McCain-1999)



- *Study of Early Child Care & Youth Development* (National Institute of Child Health & Development, 1989)
- *For the Love of Learning* (1994)
- *The Early Years Study* (Mustard, McCain-1999)
- *You Bet I Care* (2000)
  - Largest, most comprehensive Canadian study in child care to date
  - Study 1: wages, working conditions and practices
  - Study 2: quality (6 provinces, on-site observations)
  - Study 3: data on regulated family child care homes



- *Study of Early Child Care & Youth Development* (National Institute of Child Health & Development, 1989)
- *For the Love of Learning* (1994)
- *The Early Years Study* (Mustard, McCain-1999)
- *You Bet I Care* (2000)
  - Largest, most comprehensive Canadian study in child care to date
  - Study 1: wages, working conditions and practices
  - Study 2: quality (6 provinces, on-site observations)
  - Study 3: data on regulated family child care homes
- *The Early Years Study – Three Years Later* (2002)
- *North Bay & District Early Years Action Plan* (2002)
- *Early Childhood Education and Care in Canada* (2004)
- *Childcare Service Plans* (DNSSAB 2001, 2004)



## Population

- Generally a declining population in Northern Ontario (~ 5% between 1996 and 2001 census, a 2% decline in Nipissing District over the past 10 yrs).

Over the past 5 years, the 0-4 age group has decreased by approximately 9% and the JK & SK cohorts by 13%. The 7-12 age group has increased ~11%



## Population

- Generally a declining population in Northern Ontario (~ 5% between 1996 and 2001 census, a 2% decline in Nipissing District over the past 10 yrs).

Over the past 5 years, the 0-4 age group has decreased by approximately 9% and the JK & SK cohorts by 13%. The 7-12 age group has increased ~11%

## Birth rates

- Birthrates have been declining across the province and country. In Nipissing District, there has been an approximate 28% decline, between 1990 and 2002.



## Population

- Generally a declining population in Northern Ontario (~ 5% between 1996 and 2001 census, a 2% decline in Nipissing District over the past 10 yrs).

Over the past 5 years, the 0-4 age group has decreased by approximately 9% and the JK & SK cohorts by 13%. The 7-12 age group has increased ~11%

## Birth rates

- Birthrates have been declining across the province and country. In Nipissing District, there has been an approximate 28% decline, between 1990 and 2002.

## Family Composition

- Families are becoming smaller: the average size in Nipissing District is currently ~ 3 people, compared to 4 in the early 70's.
- The number of lone-parent families is increasing: ~ 17%: since 1981, or 100 families annually (Nipissing District). Approximately 15% are female.



## Population

- Generally a declining population in Northern Ontario (~ 5% between 1996 and 2001 census, a 2% decline in Nipissing District over the past 10 yrs).

Over the past 5 years, the 0-4 age group has decreased by approximately 9% and the JK & SK cohorts by 13%. The 7-12 age group has increased ~11%

## Birth rates

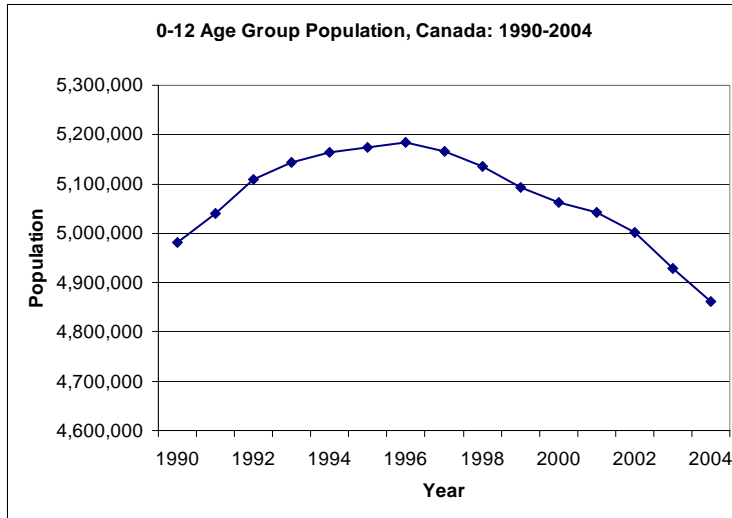
- Birthrates have been declining across the province and country. In Nipissing District, there has been an approximate 28% decline, between 1990 and 2002.

## Family Composition

- Families are becoming smaller: the average size in Nipissing District is currently ~ 3 people, compared to 4 in the early 70's.
- The number of lone-parent families is increasing: ~ 17%: since 1981, or 100 families annually (Nipissing District). Approximately 15% are female.

## Workforce Participation

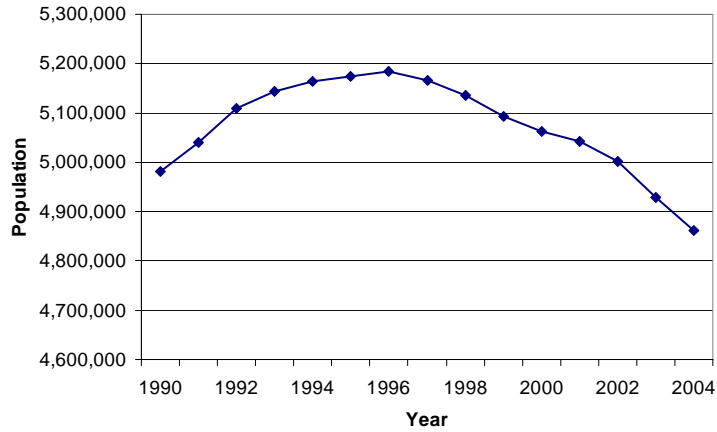
- More women are in the workforce
- The number of Mothers in the workforce is increasing: the participation rate for mothers with children 0-15 yrs. has increased approximately 18% during the past 10 years (average 75%).
- There is an increase in two-working-parent families.



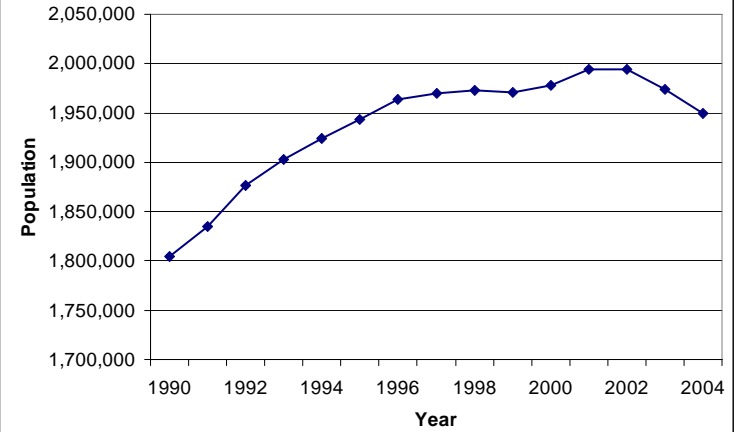
# 0-12 Age Group Population, 1990-04



0-12 Age Group Population, Canada: 1990-2004



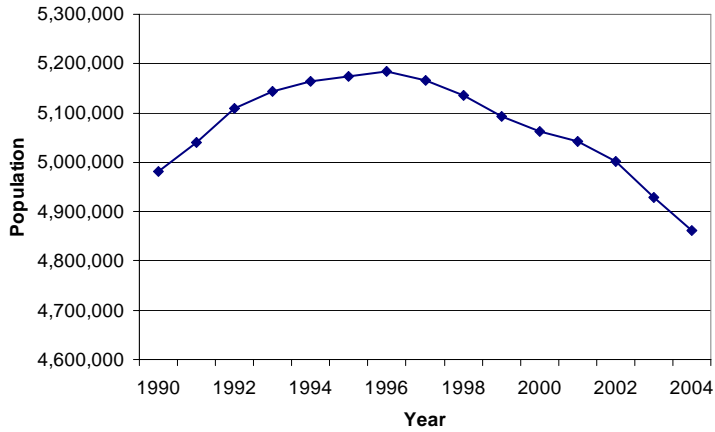
0-12 Age Group Population, Ontario: 1990-2004



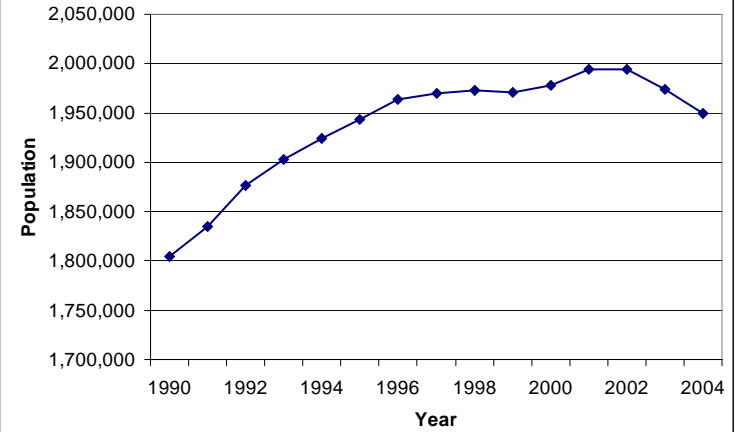
# 0-12 Age Group Population, 1990-04



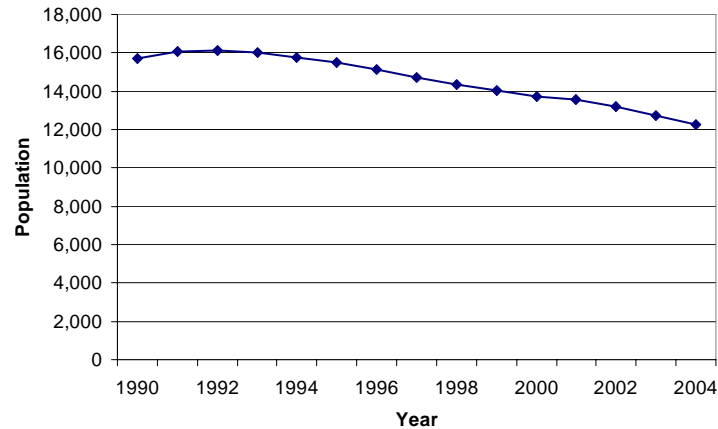
0-12 Age Group Population, Canada: 1990-2004

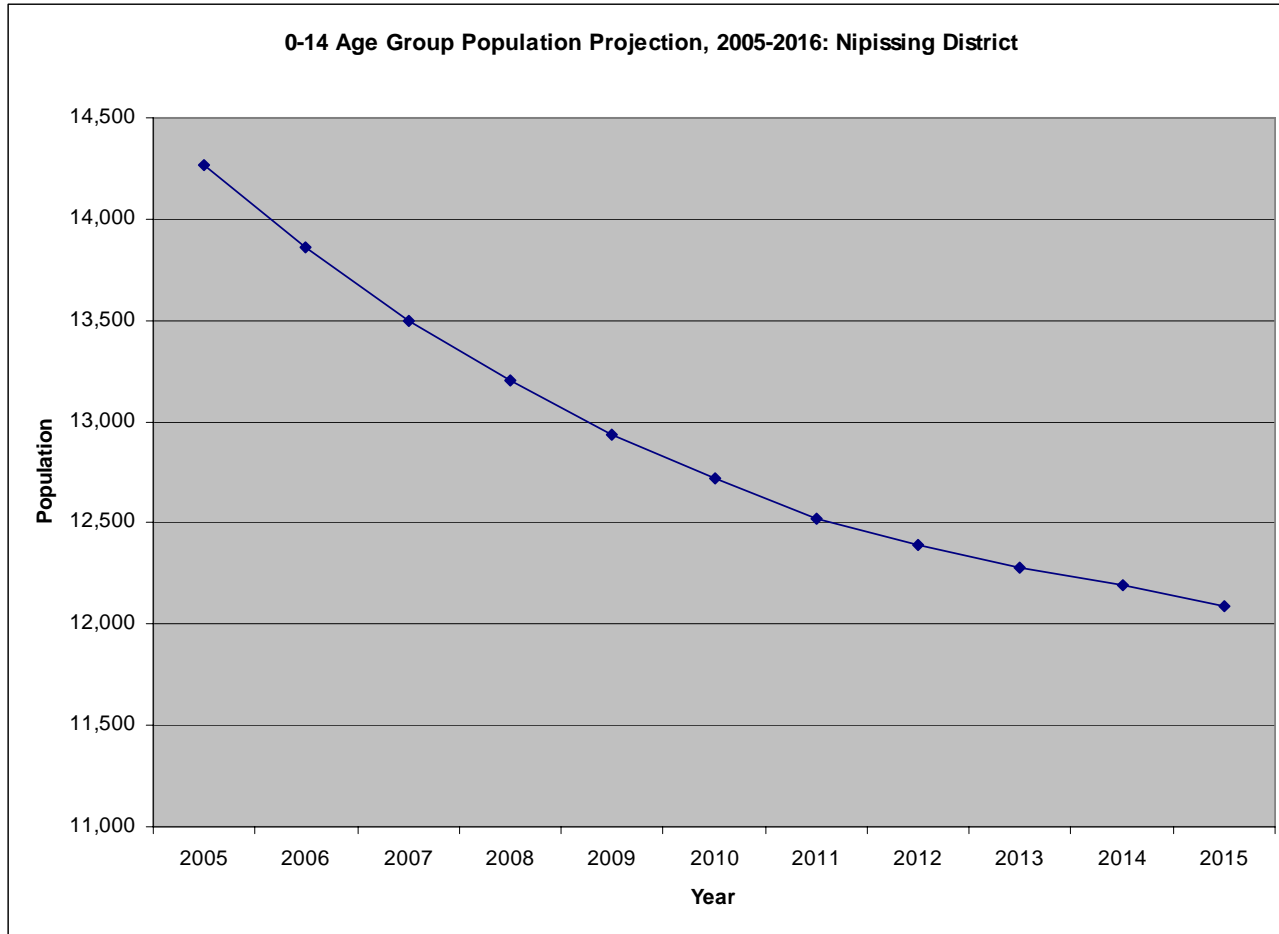


0-12 Age Group Population, Ontario: 1990-2004



0-12 Age Group Population, Nipissing District: 1990-2001

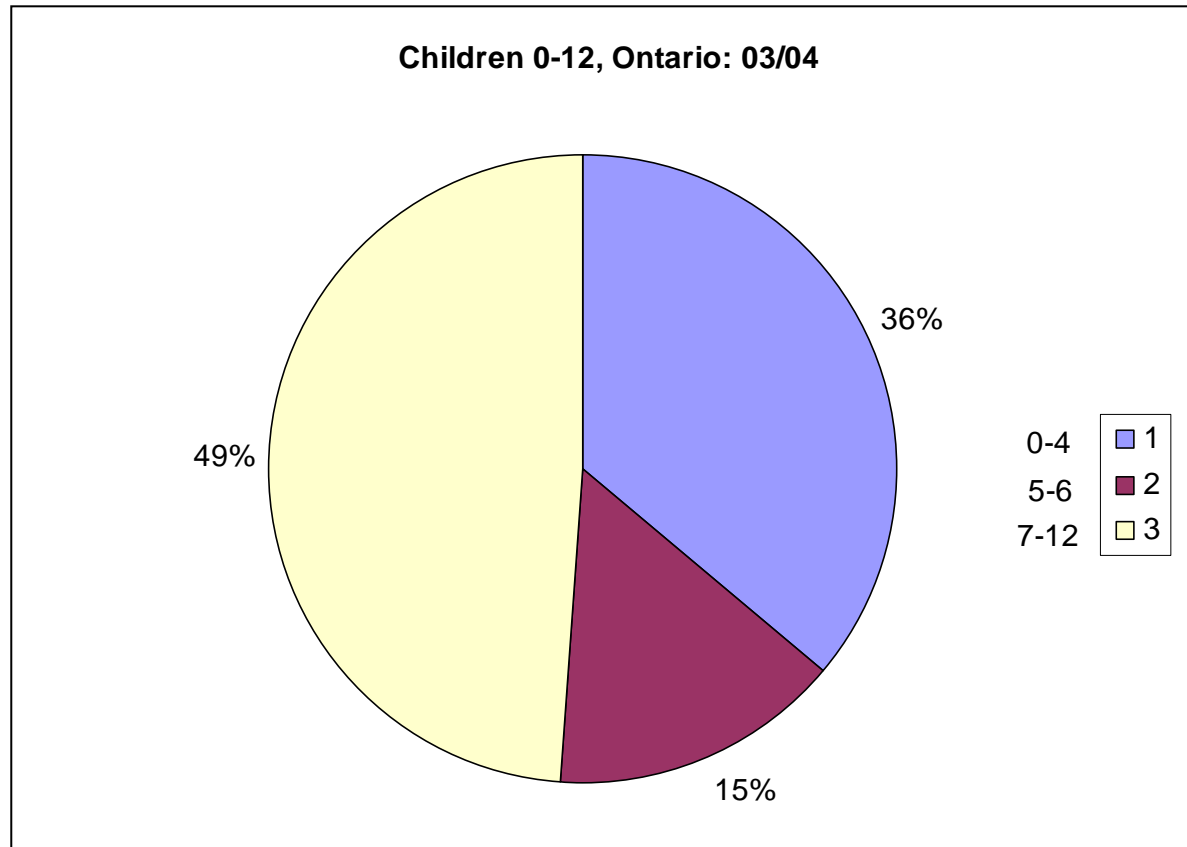






## Ontario

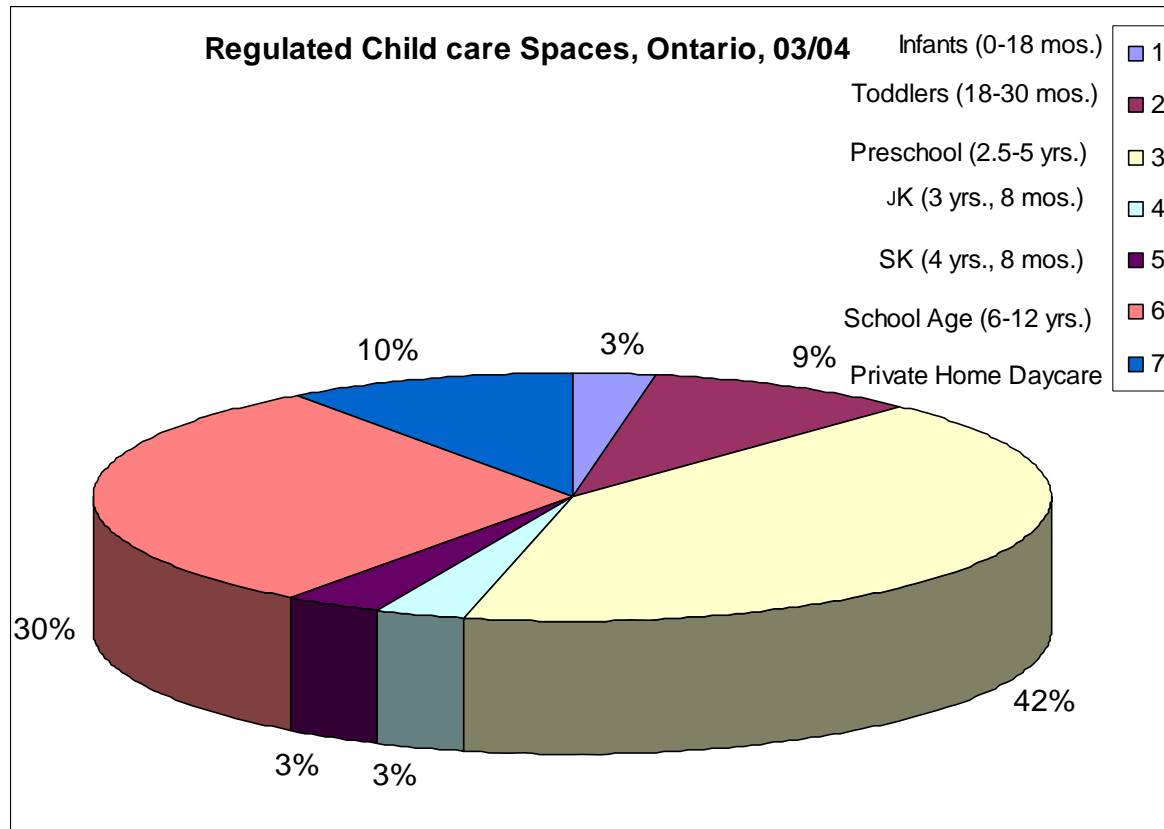
-There are approximately 1.9 million children ages 0-12 in Ontario, and 207,000 regulated childcare spaces, providing capacity for ~ 11%





## Ontario

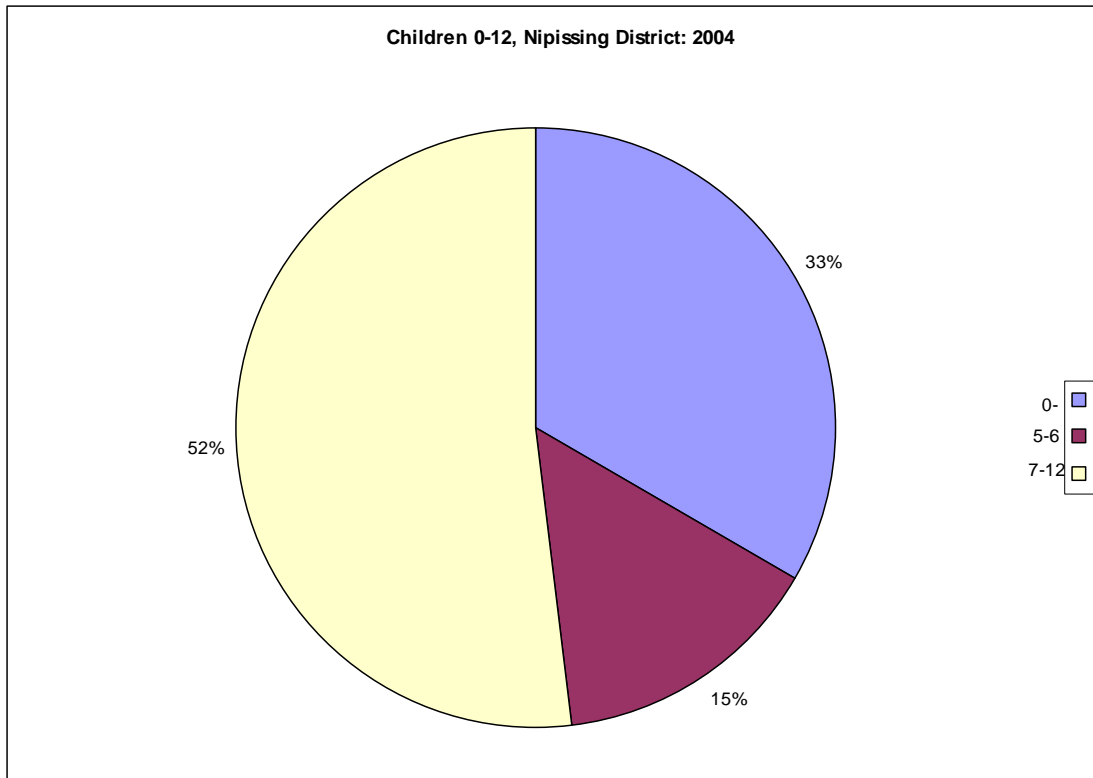
-There are approximately 1.9 million children ages 0-12 in Ontario, and 207,000 regulated childcare spaces, providing capacity for ~ 11%





## District of Nipissing

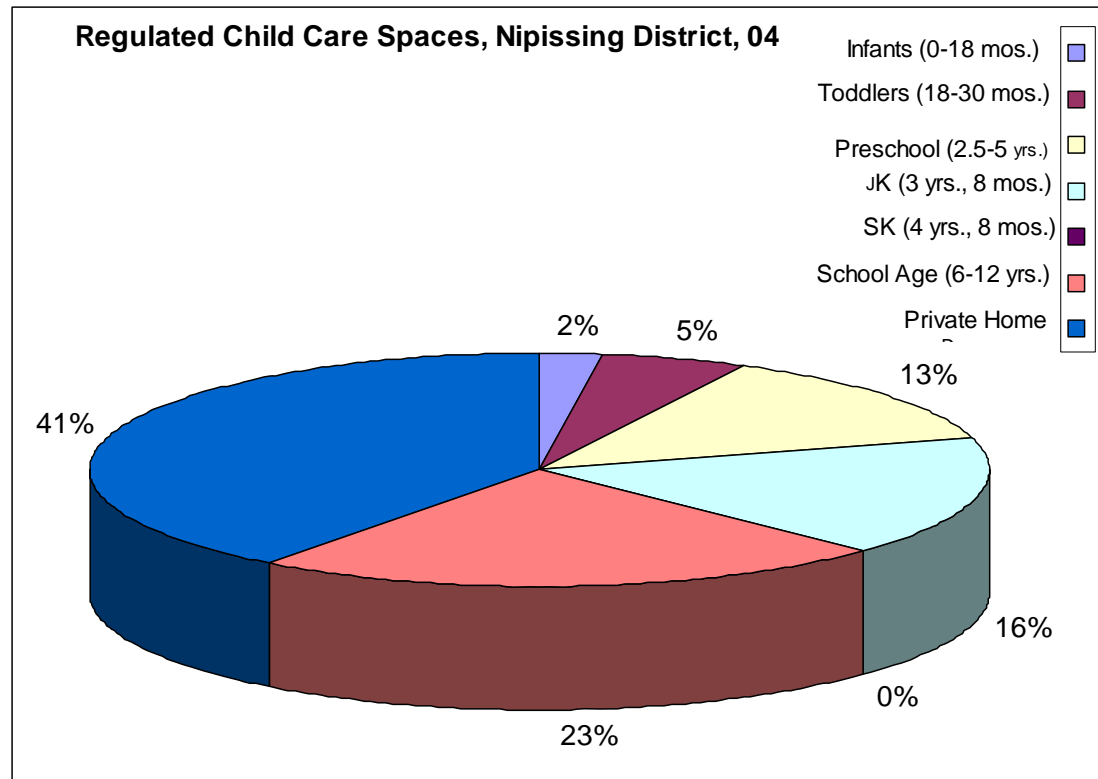
-There are approximately 12,000 children ages 0-12 in the District, and 2073 regulated childcare spaces, providing capacity for ~ 17%





## District of Nipissing

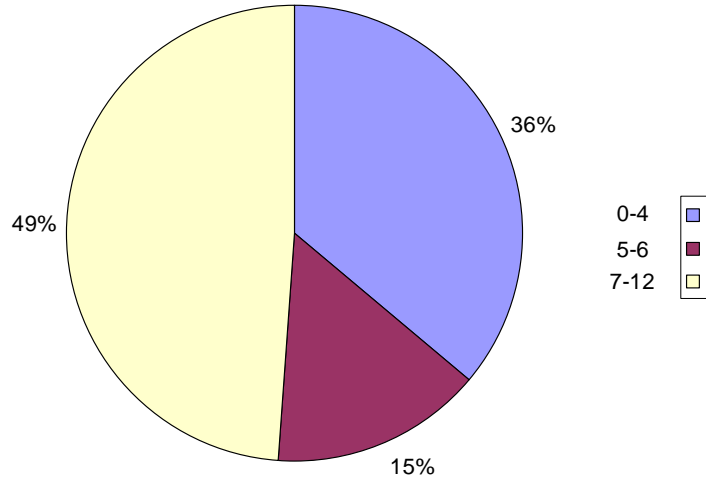
-There are approximately 12,000 children ages 0-12 in the District, and 2073 regulated childcare spaces, providing capacity for ~ 17%



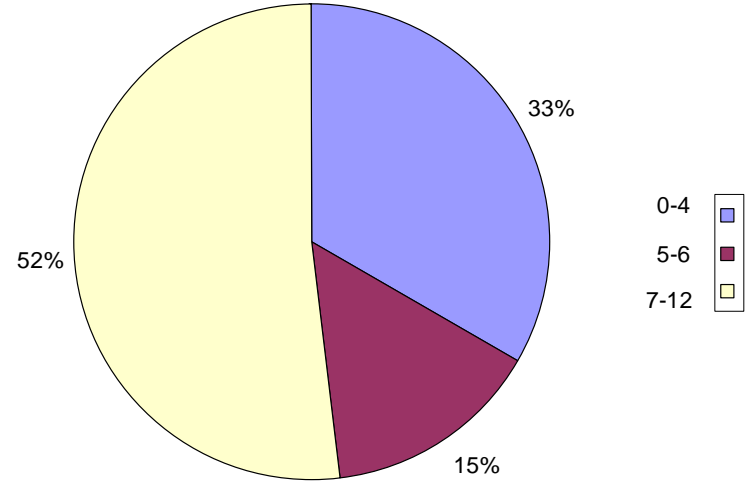
# Child Care Capacity



Children 0-12, Ontario: 03/04



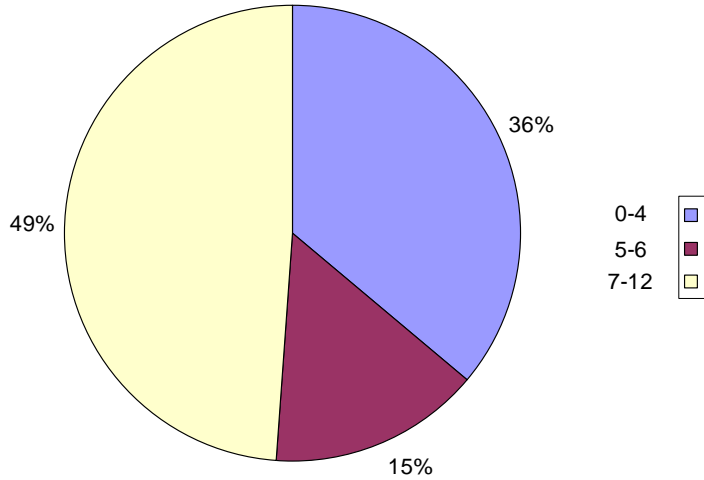
Children 0-12, Nipissing District: 2004



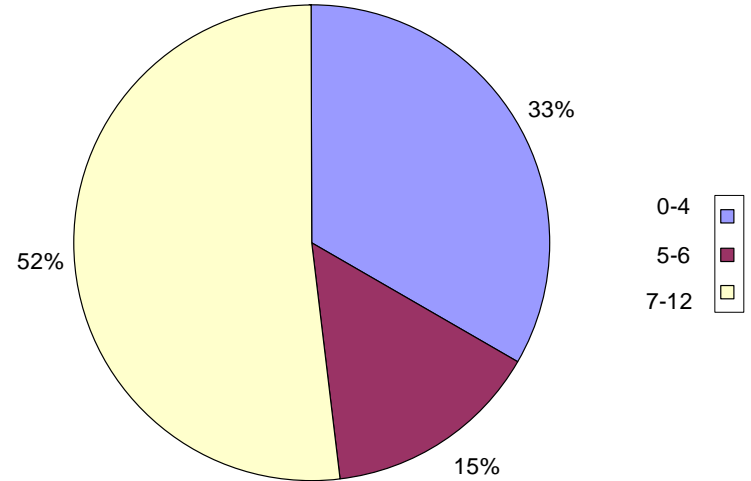
# Child Care Capacity



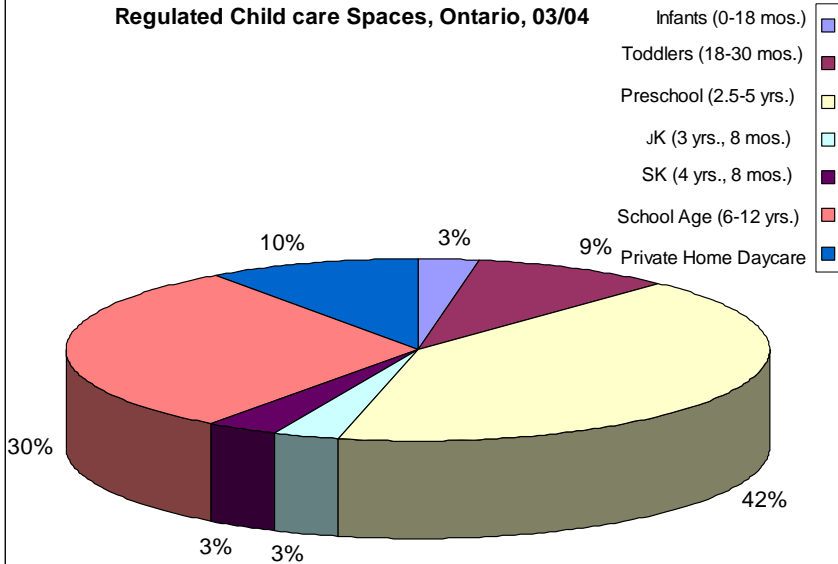
Children 0-12, Ontario: 03/04



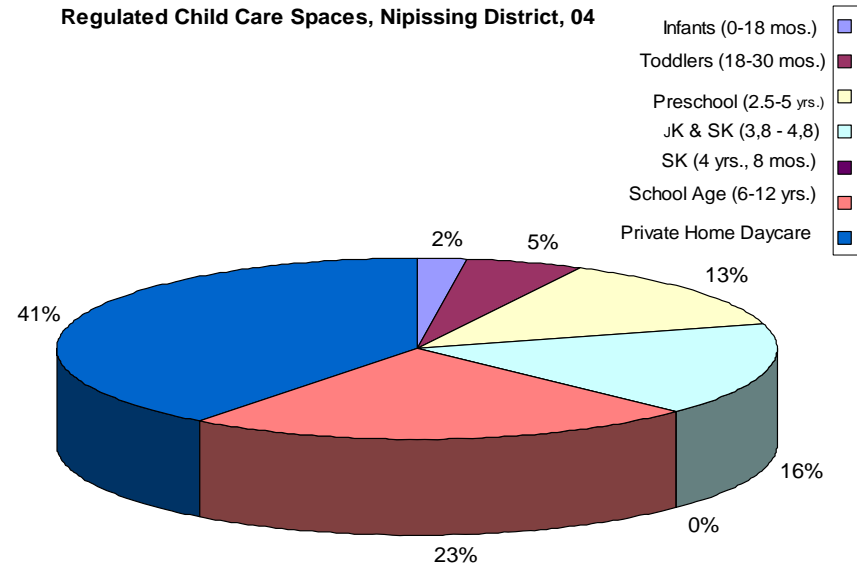
Children 0-12, Nipissing District: 2004

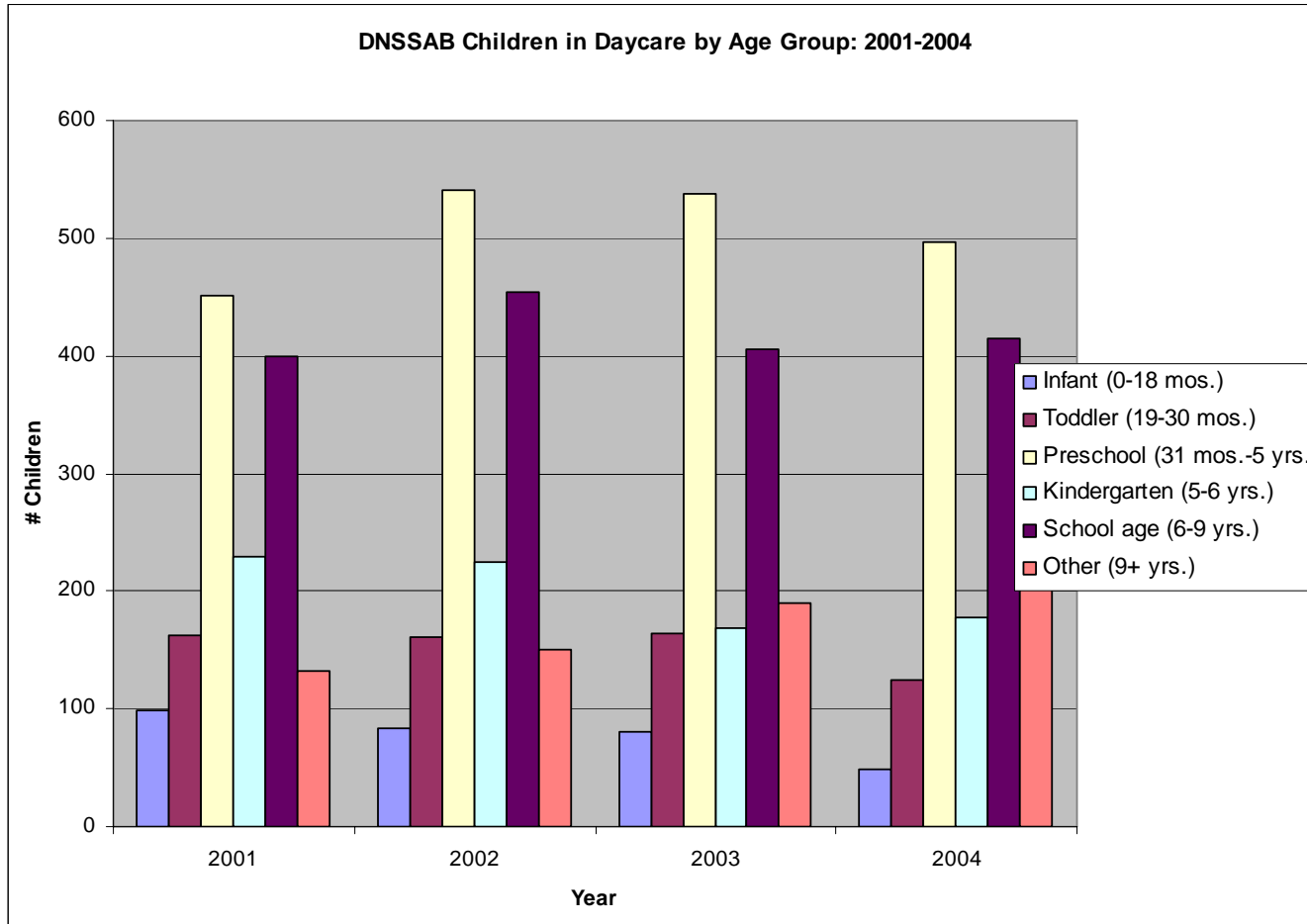


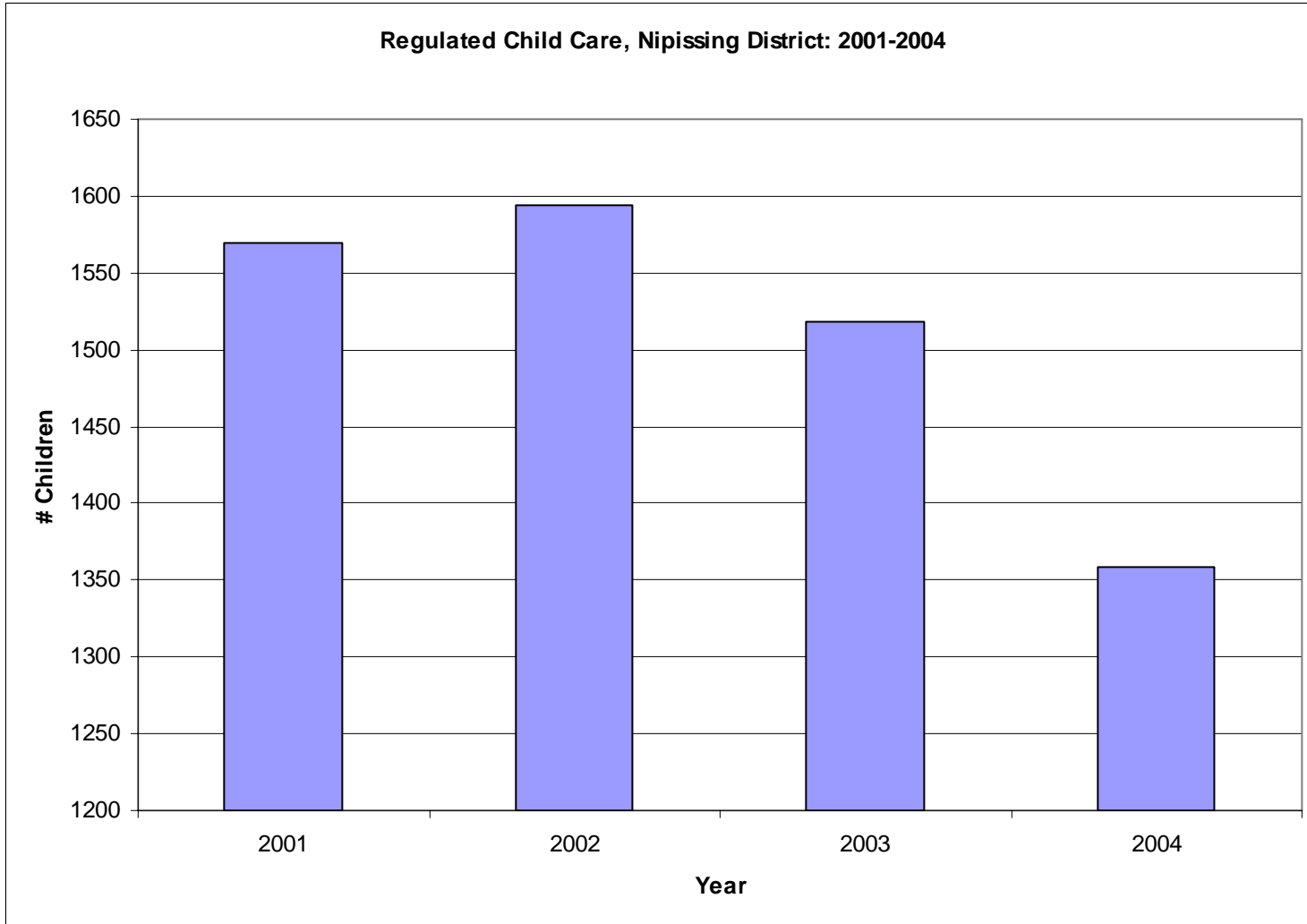
Regulated Child care Spaces, Ontario, 03/04

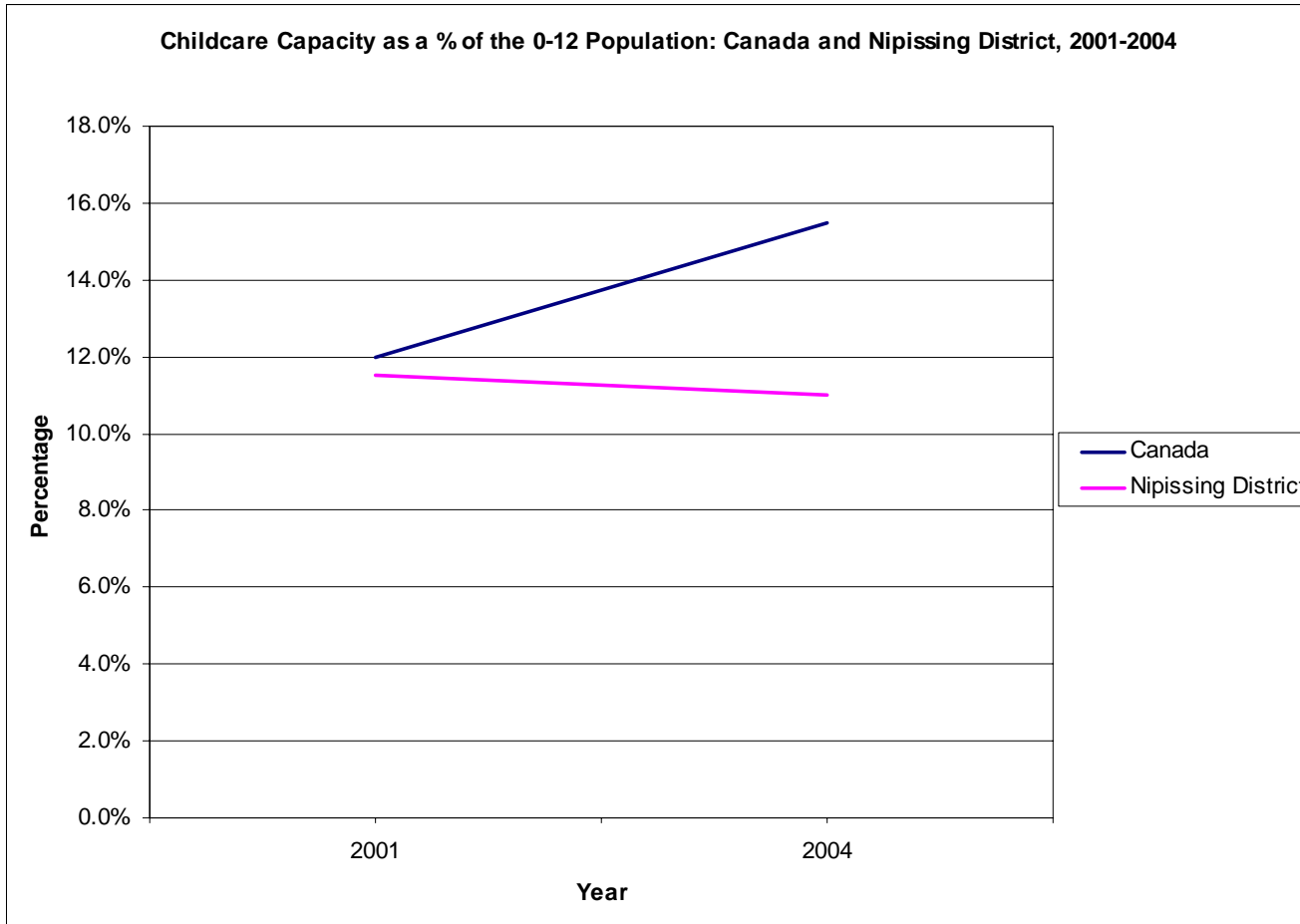


Regulated Child Care Spaces, Nipissing District, 04







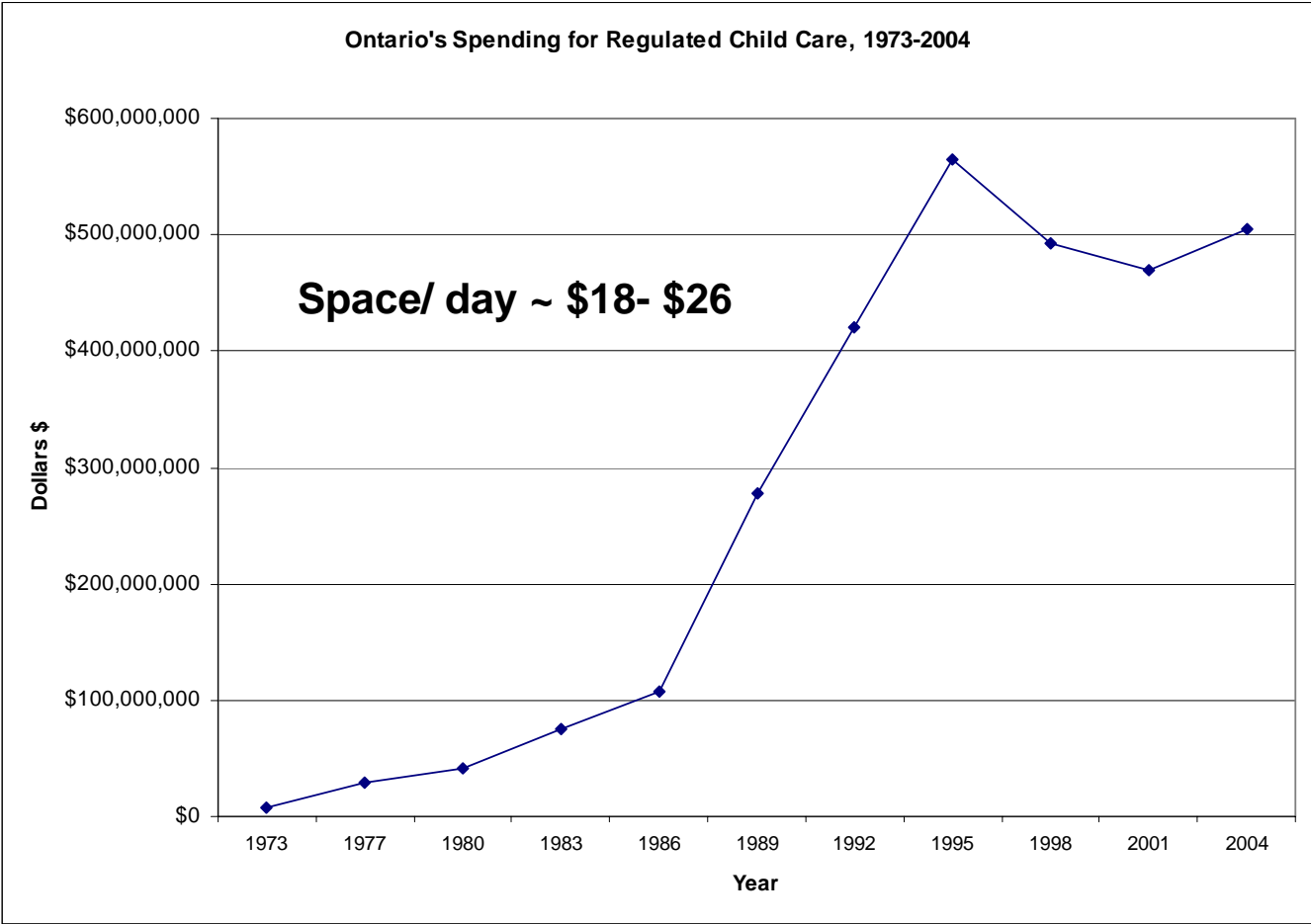
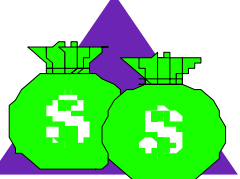


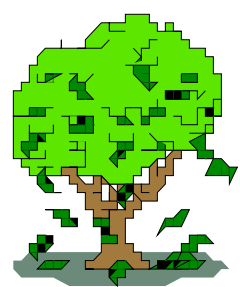


Total Childcare spending in Canada has more than tripled in the past 13 years, from approximately \$760 million in 1992, to \$2.4 Billion in 2004 (Quebec accounts for over half of this).

In Ontario, the funding peaked in 1995 at around \$540 million.

# Child Care Funding, Ontario





2003: Multilateral Framework on Early Learning and Child Care:  
 \$1 Billion over 5 years for regulated early learning and childcare-  
 Ontario's share: 2003 ~ \$9.5 million, 2004 ~\$58 million

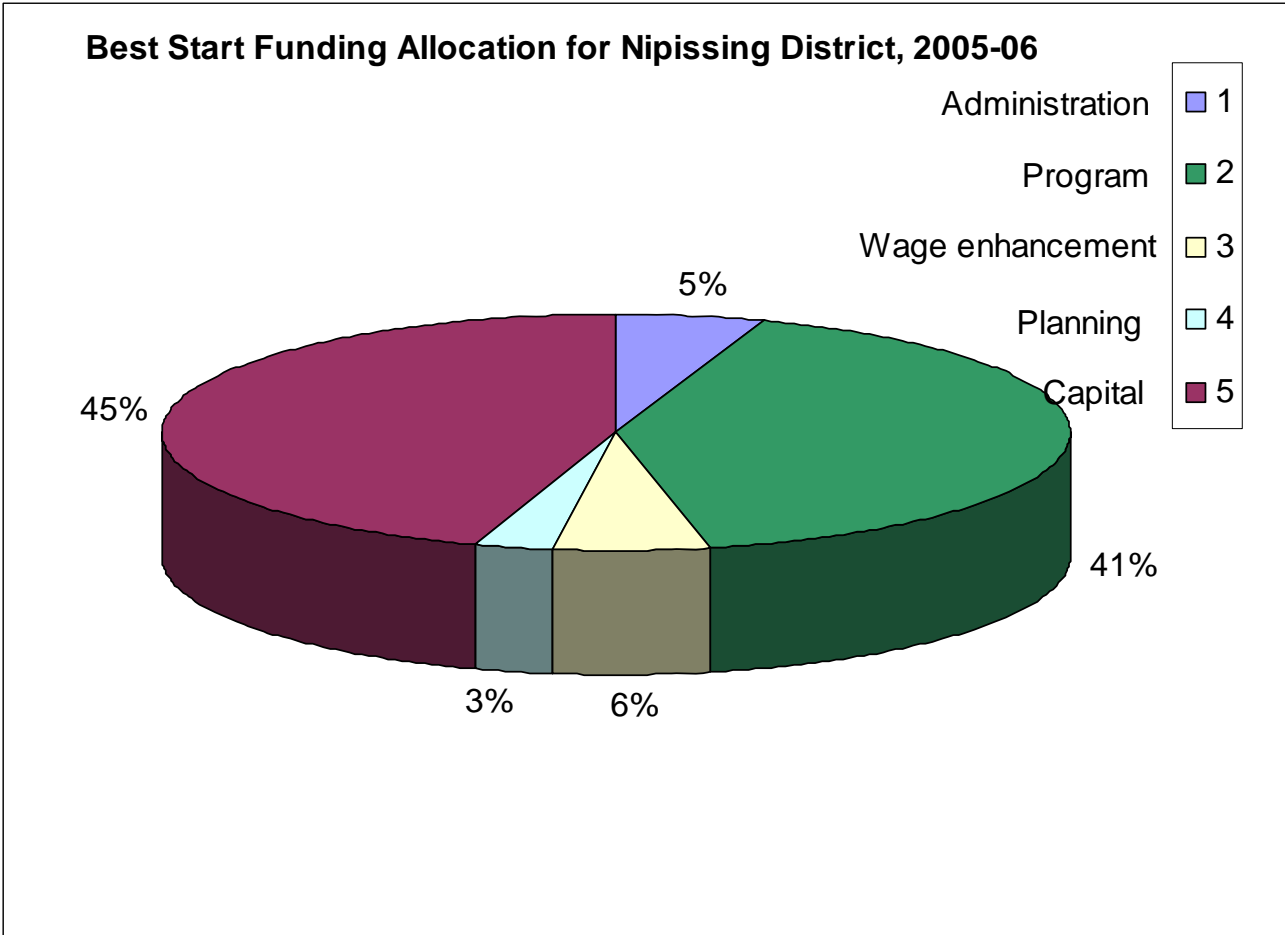
2005: Budget commitment: national childcare investment of \$5 billion  
 over the next 5 yrs:

<b>Ontario</b>	05-06	06-07	07-08	08-09	09-10	Total
2003 Multilateral Funding	\$87.4	\$116.8	\$136.6	\$136.9	\$137.2	<b>\$614.9</b>
New ELCC Funding	\$271.9	\$253.2	\$448.9	\$449.8	\$450.8	<b>\$1,874.6</b>
<b>Total</b>	<b>\$359.3</b>	<b>\$370.0</b>	<b>\$585.5</b>	<b>\$586.7</b>	<b>\$588.0</b>	<b>\$2,489.5</b>

# Child Care Funding, Best Start



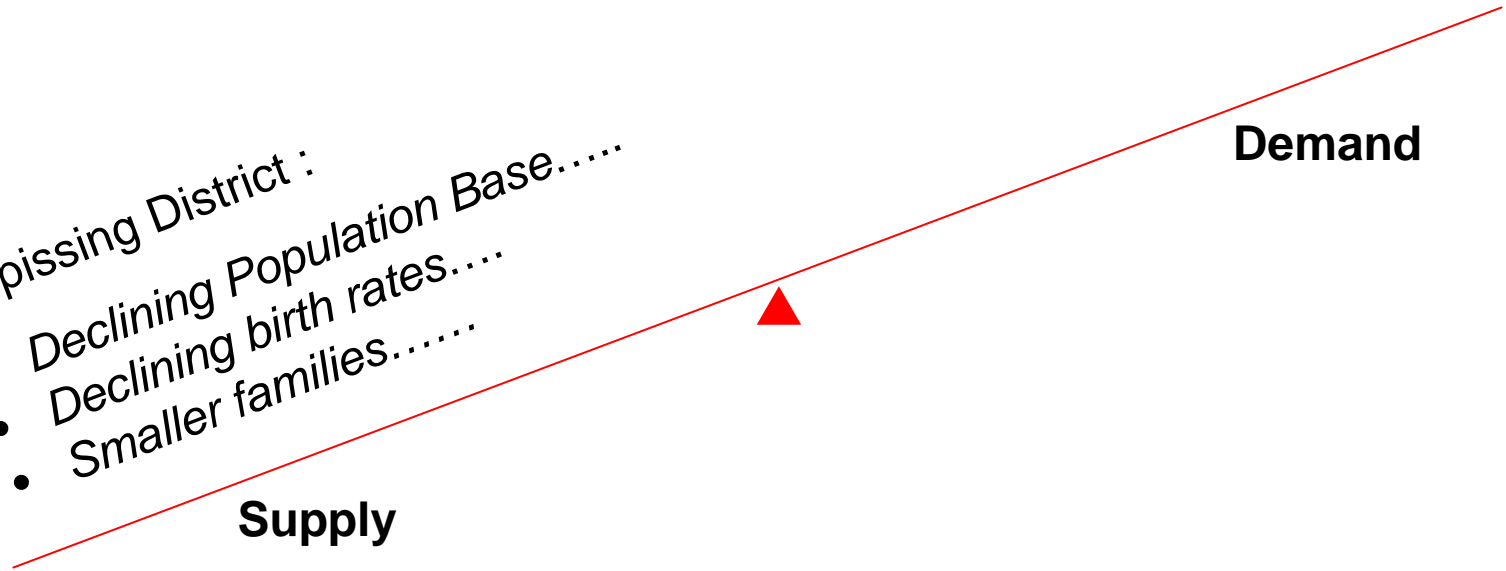
Year	05-06	06-07	07-08	Total
\$	\$1,819,900	\$1,824,900	\$3,250,000	\$6,894,800



# Best Start Implementation, Nipissing District



- Nipissing District :
- Declining Population Base.....
  - Declining birth rates.....
  - Smaller families.....





- *Declining Population Base.....*
- *Declining birth rates.....*
- *Smaller families.....*

- *Increase in lone-parent families.....*
- *Increase in workplace participation rate of Mothers.....*

---

**Supply**



**Demand**



# Best Start Implementation, Nipissing District

- *Declining Population Base.....*
- *Declining birth rates.....*
- *Smaller families.....*
- *Increase in lone-parent families.....*
- *Increase in workplace participation rate of Mothers.....*

---

**Supply**



**Demand**

***Best Start strategies will likely increase demand by:***

- ✓ Supporting flexible implementation strategies for individual communities
- ✓ Implementing a new subsidy distribution model: income testing vs. means
- ✓ Assisting more families in need, with child care costs
- ✓ Improving the quality of early learning and care programs in Ontario
- ✓ Changing policies and practices and removing barriers

**INTEGRATED  
SOCIAL SERVICES  
IN NIPISSING**

**INTÉGRATION  
DES SERVICES SOCIAUX  
DU NIPISSING**

*Thank You!*

District of Nipissing  
Social Services  
Administration Board



Conseil d'administration  
des services sociaux  
du district de Nipissing